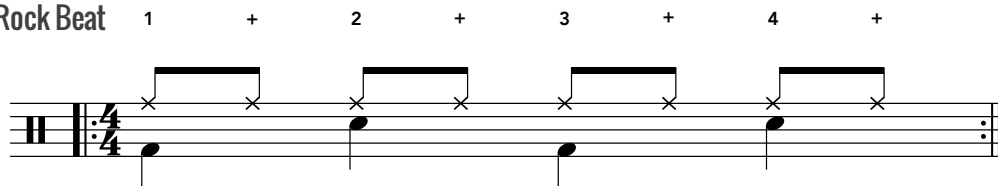


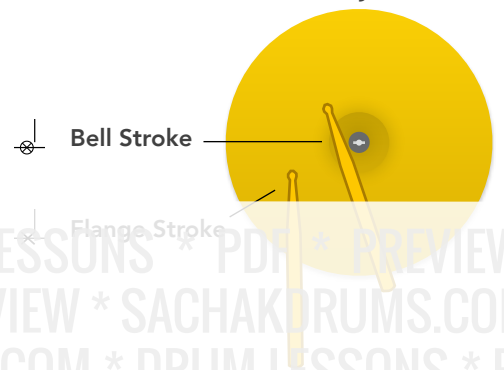
Eighth-Note Rock Beat Ride Cymbal Variations

A common variation for all rock beats is taking the hi-hat part and moving it over to the ride cymbal for a different texture, often during a section of the song with markedly different chord changes or dynamics such as the chorus or bridge. The standard areas to strike the ride cymbal are at the flange (mid-way between the bell and the cymbal's edge) with the tip of the stick, and at the bell (where the cymbal attaches) with the shoulder of the stick. The following exercises apply both striking methods in various combinations.

Eighth-Note Rock Beat



Ride Cymbal



With Metronome

Play at ♩ = 60 Repeat all EXs at ♩ = 100

EX. 1 Ride Part (Bell Strokes)

Count:



EX. 2 Full Beat



EX. 6 - Ride Part

EX. 7 - Full Beat

EX. 8

EX. 9

EX. 10

EX. 16 - Ride Part

Musical notation for EX. 16 - Ride Part. It shows a single staff with a treble clef and a key signature of one flat. The notation consists of four measures, each containing a half note with an accent (>) and a circled number above it: ①, ②, ③, and ④. Above each measure is a circled plus sign (+). The notes are connected by a horizontal line, indicating a continuous sound. The first measure has a circled plus sign (+) above the circled number ①. The second measure has a circled plus sign (+) above the circled number ②. The third measure has a circled plus sign (+) above the circled number ③. The fourth measure has a circled plus sign (+) above the circled number ④.

EX. 17 - Full Beat

EX. 18

Musical notation for EX. 17 - Full Beat and EX. 18. EX. 17 consists of four measures, each with a circled number above it: ①, ②, ③, and ④. Above each measure is a circled plus sign (+). EX. 18 consists of four measures, each with a circled number above it: ①, ②, ③, and ④. Above each measure is a circled plus sign (+). The notation is identical to EX. 16, showing a continuous half-note sound with accents and circled numbers.

EX. 19

EX. 20

EX. 21 - Ride Part

EX. 24

EX. 25

EX. 26 - Ride Part

Musical notation for EX. 26 - Ride Part. It consists of a single staff with a treble clef and a key signature of one flat. The notation shows four measures of music, each starting with a circled number (1, 2, 3, 4) and a plus sign (+). Above each measure is a bracket with a greater-than sign (>) at the start and an 'x' at the end, indicating a ride pattern. The notes are quarter notes on the staff.

EX. 27 - Full Beat

Musical notation for EX. 27 - Full Beat. It consists of a single staff with a treble clef and a key signature of one flat. The notation shows four measures of music, each starting with a circled number (1, 2, 3, 4) and a plus sign (+). Above each measure is a bracket with a greater-than sign (>) at the start and an 'x' at the end, indicating a ride pattern. The notes are quarter notes on the staff.

EX. 28

Musical notation for EX. 28. It consists of a single staff with a treble clef and a key signature of one flat. The notation shows four measures of music, each starting with a circled number (1, 2, 3, 4) and a plus sign (+). Above each measure is a bracket with a greater-than sign (>) at the start and an 'x' at the end, indicating a ride pattern. The notes are quarter notes on the staff.

EX. 29

Musical notation for EX. 29. It consists of a single staff with a treble clef and a key signature of one flat. The notation shows four measures of music, each starting with a circled number (1, 2, 3, 4) and a plus sign (+). Above each measure is a bracket with a greater-than sign (>) at the start and an 'x' at the end, indicating a ride pattern. The notes are quarter notes on the staff.

EX. 30

Musical notation for EX. 30. It consists of a single staff with a treble clef and a key signature of one flat. The notation shows four measures of music, each starting with a circled number (1, 2, 3, 4) and a plus sign (+). Above each measure is a bracket with a greater-than sign (>) at the start and an 'x' at the end, indicating a ride pattern. The notes are quarter notes on the staff.