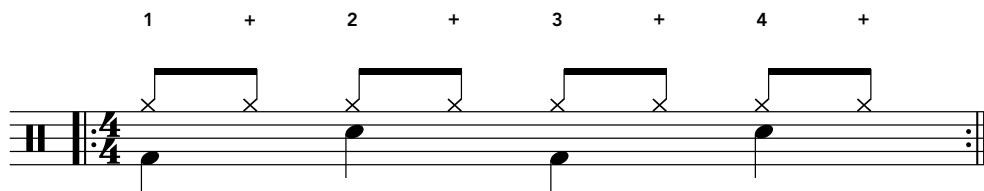


Eighth-Note Rock Beat Hi-Hat Accents


This lesson adds hi-hat accents to various eighth-note positions in the eighth-note rock beat to add a different rhythmic character and feel. Accented (loud) notes are indicated by an arrowhead (>) above or below the note.

Eighth-Note Rock Beat (No Accents)



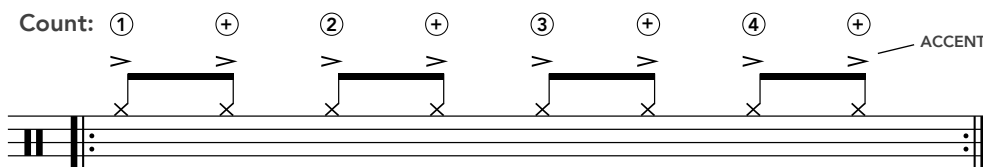
Count out and play each exercise below at a slow, steady tempo, repeat 4 times then move on to the next. Remember to count aloud as you play, especially for any beats you find difficult. When complete, repeat all exercises at a slightly faster tempo.

With Metronome
 Play at ♩ = 60 Repeat all EXs at ♩ = 80



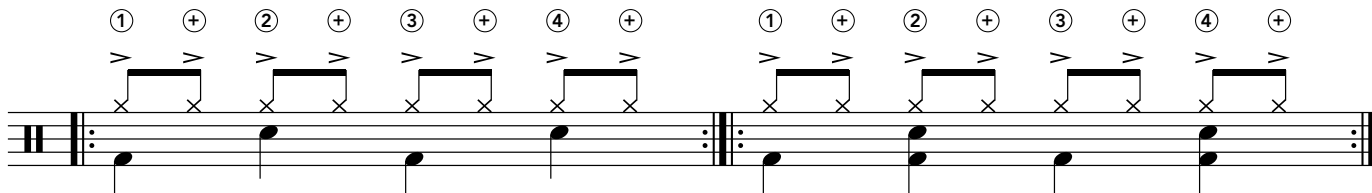
EXs 15 - Accent All Eighth Notes

EX. 1 - Hi-Hat Part



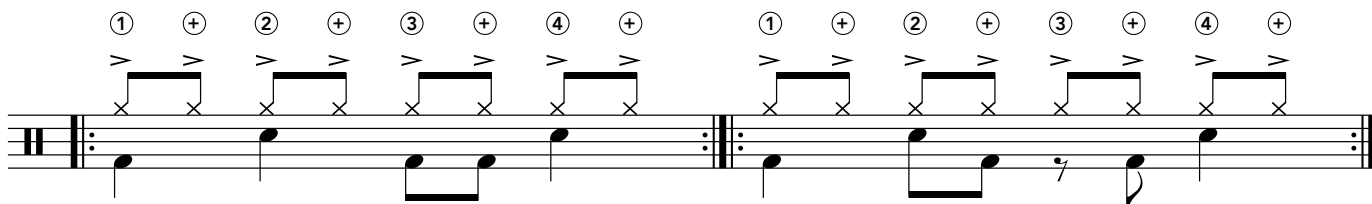
EX. 2

EX. 3



EX. 4

EX. 5



EXs 6-10 - Accents On Downbeats

EX. 6 - Hi-Hat Part

EX. 7

EX. 8

EX. 9

EX. 10

EXs 11-15 - Accents On Offbeats

EX. 11

EX. 12

EX. 13

EX. 14

EX. 15

EXs 16-20 - Pattern One

EX. 16

Musical notation for EX. 16. It consists of a single staff with a treble clef and a key signature of one sharp (F#). The notation shows four groups of two eighth notes beamed together, each starting on a different line of the staff (lines 1, 2, 3, and 4). Above each group, there is a circled number (1, 2, 3, 4) and a plus sign (+). A greater-than sign (>) is placed above the first note of each pair. The exercise ends with a double bar line and repeat dots.

EX. 17

Musical notation for EX. 17. It consists of a single staff with a treble clef and a key signature of one sharp (F#). The notation shows four groups of two eighth notes beamed together, each starting on a different line of the staff (lines 1, 2, 3, and 4). Above each group, there is a circled number (1, 2, 3, 4) and a plus sign (+). A greater-than sign (>) is placed above the first note of each pair. The exercise ends with a double bar line and repeat dots.

EX. 18

Musical notation for EX. 18. It consists of a single staff with a treble clef and a key signature of one sharp (F#). The notation shows four groups of two eighth notes beamed together, each starting on a different line of the staff (lines 1, 2, 3, and 4). Above each group, there is a circled number (1, 2, 3, 4) and a plus sign (+). A greater-than sign (>) is placed above the first note of each pair. The exercise ends with a double bar line and repeat dots.

EX. 19

Musical notation for EX. 19. It consists of a single staff with a treble clef and a key signature of one sharp (F#). The notation shows four groups of two eighth notes beamed together, each starting on a different line of the staff (lines 1, 2, 3, and 4). Above each group, there is a circled number (1, 2, 3, 4) and a plus sign (+). A greater-than sign (>) is placed above the first note of each pair. The exercise ends with a double bar line and repeat dots.

EX. 20

Musical notation for EX. 20. It consists of a single staff with a treble clef and a key signature of one sharp (F#). The notation shows four groups of two eighth notes beamed together, each starting on a different line of the staff (lines 1, 2, 3, and 4). Above each group, there is a circled number (1, 2, 3, 4) and a plus sign (+). A greater-than sign (>) is placed above the first note of each pair. The exercise ends with a double bar line and repeat dots.

EXs 21-25 - Pattern Two

EX. 21

Musical notation for EX. 21. It consists of a single staff with a treble clef and a key signature of one sharp (F#). The notation shows four groups of two eighth notes beamed together, each starting on a different line of the staff (lines 1, 2, 3, and 4). Above each group, there is a circled number (1, 2, 3, 4) and a plus sign (+). A greater-than sign (>) is placed above the first note of each pair. The exercise ends with a double bar line and repeat dots.

EX. 22

Musical notation for EX. 22. It consists of a single staff with a treble clef and a key signature of one sharp (F#). The notation shows four groups of two eighth notes beamed together, each starting on a different line of the staff (lines 1, 2, 3, and 4). Above each group, there is a circled number (1, 2, 3, 4) and a plus sign (+). A greater-than sign (>) is placed above the first note of each pair. The exercise ends with a double bar line and repeat dots.

EX. 23

Musical notation for EX. 23. It consists of a single staff with a treble clef and a key signature of one sharp (F#). The notation shows four groups of two eighth notes beamed together, each starting on a different line of the staff (lines 1, 2, 3, and 4). Above each group, there is a circled number (1, 2, 3, 4) and a plus sign (+). A greater-than sign (>) is placed above the first note of each pair. The exercise ends with a double bar line and repeat dots.

EX. 24

Musical notation for EX. 24. It consists of a single staff with a treble clef and a key signature of one sharp (F#). The notation shows four groups of two eighth notes beamed together, each starting on a different line of the staff (lines 1, 2, 3, and 4). Above each group, there is a circled number (1, 2, 3, 4) and a plus sign (+). A greater-than sign (>) is placed above the first note of each pair. The exercise ends with a double bar line and repeat dots.

EX. 25

Musical notation for EX. 25. It consists of a single staff with a treble clef and a key signature of one sharp (F#). The notation shows four groups of two eighth notes beamed together, each starting on a different line of the staff (lines 1, 2, 3, and 4). Above each group, there is a circled number (1, 2, 3, 4) and a plus sign (+). A greater-than sign (>) is placed above the first note of each pair. The exercise ends with a double bar line and repeat dots.

Exs 26-30 - Pattern Three

EX. 26

Musical notation for EX. 26. It consists of a single staff with a treble clef and a key signature of one flat. The notation shows four groups of notes, each starting with a circled number (1, 2, 3, 4) and a plus sign. Each group contains two notes with stems pointing down, connected by a horizontal line. Above each group is a greater-than sign (>). The groups are separated by plus signs (+).

EX. 27

Musical notation for EX. 27. It consists of a single staff with a treble clef and a key signature of one flat. The notation shows four groups of notes, each starting with a circled number (1, 2, 3, 4) and a plus sign. Each group contains two notes with stems pointing down, connected by a horizontal line. Above each group is a greater-than sign (>). The groups are separated by plus signs (+). Below each group is a single note with a stem pointing up.

EX. 28

Musical notation for EX. 28. It consists of a single staff with a treble clef and a key signature of one flat. The notation shows four groups of notes, each starting with a circled number (1, 2, 3, 4) and a plus sign. Each group contains two notes with stems pointing down, connected by a horizontal line. Above each group is a greater-than sign (>). The groups are separated by plus signs (+). Below each group is a single note with a stem pointing up.

EX. 29

Musical notation for EX. 29. It consists of a single staff with a treble clef and a key signature of one flat. The notation shows four groups of notes, each starting with a circled number (1, 2, 3, 4) and a plus sign. Each group contains two notes with stems pointing down, connected by a horizontal line. Above each group is a greater-than sign (>). The groups are separated by plus signs (+). Below each group is a single note with a stem pointing up.

EX. 30

Musical notation for EX. 30. It consists of a single staff with a treble clef and a key signature of one flat. The notation shows four groups of notes, each starting with a circled number (1, 2, 3, 4) and a plus sign. Each group contains two notes with stems pointing down, connected by a horizontal line. Above each group is a greater-than sign (>). The groups are separated by plus signs (+). Below each group is a single note with a stem pointing up.

Exs 31-35 - Pattern Four

EX. 31

Musical notation for EX. 31. It consists of a single staff with a treble clef and a key signature of one flat. The notation shows four groups of notes, each starting with a circled number (1, 2, 3, 4) and a plus sign. Each group contains two notes with stems pointing down, connected by a horizontal line. Above each group is a greater-than sign (>). The groups are separated by plus signs (+).

EX. 32

Musical notation for EX. 32. It consists of a single staff with a treble clef and a key signature of one flat. The notation shows four groups of notes, each starting with a circled number (1, 2, 3, 4) and a plus sign. Each group contains two notes with stems pointing down, connected by a horizontal line. Above each group is a greater-than sign (>). The groups are separated by plus signs (+). Below each group is a single note with a stem pointing up.

EX. 33

Musical notation for EX. 33. It consists of a single staff with a treble clef and a key signature of one flat. The notation shows four groups of notes, each starting with a circled number (1, 2, 3, 4) and a plus sign. Each group contains two notes with stems pointing down, connected by a horizontal line. Above each group is a greater-than sign (>). The groups are separated by plus signs (+). Below each group is a single note with a stem pointing up.

EX. 34

Musical notation for EX. 34. It consists of a single staff with a treble clef and a key signature of one flat. The notation shows four groups of notes, each starting with a circled number (1, 2, 3, 4) and a plus sign. Each group contains two notes with stems pointing down, connected by a horizontal line. Above each group is a greater-than sign (>). The groups are separated by plus signs (+). Below each group is a single note with a stem pointing up.

EX. 35

Musical notation for EX. 35. It consists of a single staff with a treble clef and a key signature of one flat. The notation shows four groups of notes, each starting with a circled number (1, 2, 3, 4) and a plus sign. Each group contains two notes with stems pointing down, connected by a horizontal line. Above each group is a greater-than sign (>). The groups are separated by plus signs (+). Below each group is a single note with a stem pointing up.