

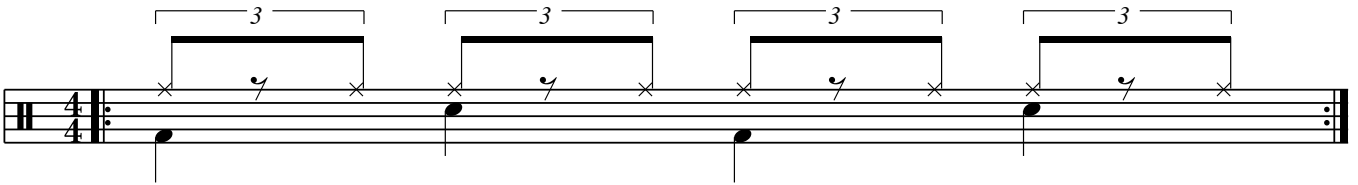
SACHA KLOOSTRA - DRUM LESSONS

HALF-TIME SHUFFLE

Introduction

The **half-time shuffle** is similar to the rock shuffle groove, but with pulses that have twice the note-value than normal. It may also be thought of as a sixteenth-note rock beat with 'swung' sixteenth-notes (which are actually sixteenth-note triplets with the first and third note of each triplet played, but not the second).

ORIGINAL ROCK SHUFFLE



2-BAR ROCK SHUFFLE - HALF TIME FEEL



COUNT



HALF-TIME SHUFFLE

